

**1 ft. x 2 ft.**

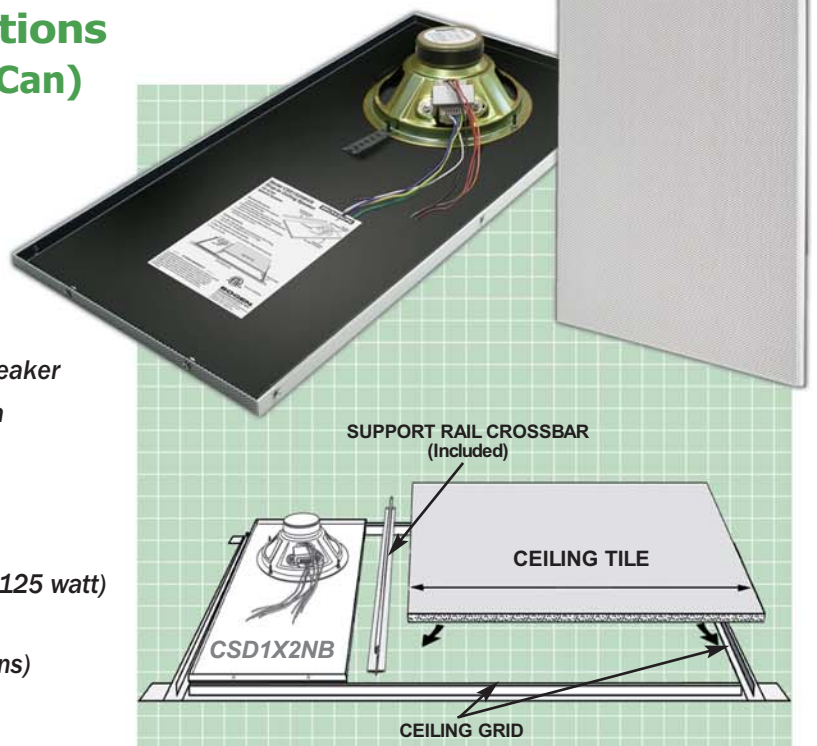
# DROP-IN CEILING SPEAKERS

**INSTALLS  
FAST  
& EASY!**

## Drop-In Ceiling Speaker CSD1X2NB & Variations (Exposed Driver without Back Can)

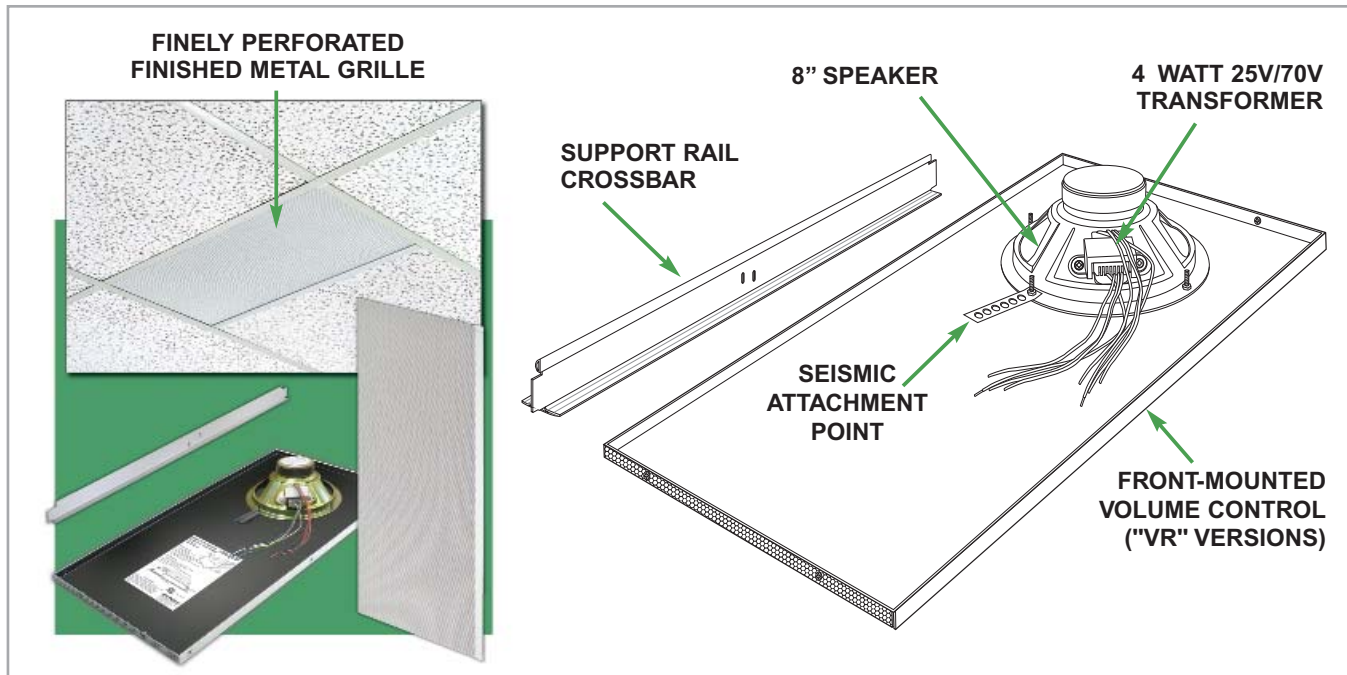
Bogen's CSD1X2NB Drop-In Ceiling Speakers are full-range speakers that allow for fast and easy installation. Just make one simple cut to the ceiling tile, lay the support rail crossbar (included) across the ceiling grid, and drop the speaker into place.

- *Finely perforated grille over the entire front of speaker*
- *Fully enclosed, industrial grade steel construction*
- *Exposed driver without back can*
- *8" wide range loudspeaker*
- *Seismic attachment point*
- *70V/25V, 4-watt transformer (4, 2, 1, 0.5, 0.25, 0.125 watt) taps; selected by stripped & tinned leads*
- *Available in off-white and bright white ("U" versions) grille finish*
- *"VR" versions have a Recessed Volume Control (front-mounted)*
- *Support Rail Crossbar (included)*



**BOGEN®**

# Drop-In Ceiling Speaker CSD1X2NB & Variations (Exposed Driver without Back Can)



CSD1X2NB Model Variations	Off-White Finish	Bright White Finish (U)	Recessed Volume Control (VR)
CSD1X2NB	●		
CSD1X2NBU		●	
CSD1X2NBVR	●		●
CSD1X2NBVRU		●	●

## SPECIFICATIONS

Frequency Response . . . . . 78 Hz - 16 kHz  
 SPL @ 1W / 1m . . . . . 93 dB  
 Power Taps . . . . . 4, 2, 1, 0.5, 0.25, 0.125 watts  
 Dispersion @ 2 kHz  
 (6 dB down) . . . . . 100°  
 Cone Material & Surround . . . . . Treated paper  
 Cone . . . . . 8"  
 Magnet Weight . . . . . 6 oz.  
 Connection . . . . . Via wire nuts (included)  
 Dimensions . . . . . 12-7/8" W x 4-3/4" H x 23-3/4" D  
 Product Weight . . . . . 7 lb.

*70V and 25V compatible.*

### Architect and Engineer Specifications

The speaker shall be a **Bogen Model CSD1X2NB**. It shall be a 1 ft. x 2 ft. steel assembly with non-reflective, finished metal grille; damped high-compliance factory-mounted 8" loudspeaker with a treated paper cone; and 70V/25V transformer. Transformer shall have power taps of 4, 2, 1, 0.5, 0.25, and 0.125 watts, selectable by stripped and tinned leads. The 8" main speaker cone shall have a 6 ounce magnet. The back of the assembly will have an exposed driver without back can. The speaker shall include a seismic attachment point. Output shall be 93 dB @ 1W/1m (min.). Frequency response shall be 78 Hz - 16 kHz (min.) The speaker shall measure 12-7/8" W x 4-3/4" H x 23-3/4" D. The speaker shall weigh 7 lb. A support rail crossbar shall be included.

**For CSD1X2NB:** Front grille finish shall be off-white in color.

**For CSD1X2NBU:** Front grille finish shall be bright white in color.

**For CSD1X2NBVR:** Front grille finish shall be off-white in color. An easily accessible, front-mounted, recessed volume control shall be included.

**For CSD1X2NBVRU:** Front grille finish shall be bright white in color. An easily accessible, front-mounted, recessed volume control shall be included.

**BOGEN®**  
COMMUNICATIONS, INC.

50 Spring Street, Ramsey, NJ 07446, U.S.A.  
Tel: 201-934-8500 • Fax: 201-934-9832 www.bogen.com

Specifications subject to change without notice.  
© 2007 Bogen Communications, Inc.  
Part No. 54-9279-01C 0902